



EESTI PÜUETEGA INIMESTE KODA  
THE ESTONIAN CHAMBER OF DISABLED PEOPLE



ASMENS SU NEGALIA TEISIŲ  
APSAUGOS AGENTŪRA  
PRIE LIETUVOS RESPUBLIKOS SOCIALINĖS  
APSAUGOS IR DARBO MINISTERIJOS

epifond



GOVERNMENT OF MALTA  
MINISTRY FOR INCLUSION,  
VOLUNTARY ORGANISATIONS  
AND CONSUMER RIGHTS



Co-funded by  
the European Union

Digital for All  
Pilot training 1st module

30. Sept. – 02. Oct 2024 at Tammistu family center, Estonia

## Venue and practicalities

1st module of the pilot training will be held during 3 days in Estonia. The accommodation and catering and joint training hours for all participants are in one building (on the 1st picture). Work in groups is taking place in the historical building just across a lawn, which is accessible (yellow building).







Group work is taking place in the building shown above. Also here 2 single rooms in the upper floor are available with own bathrooms.



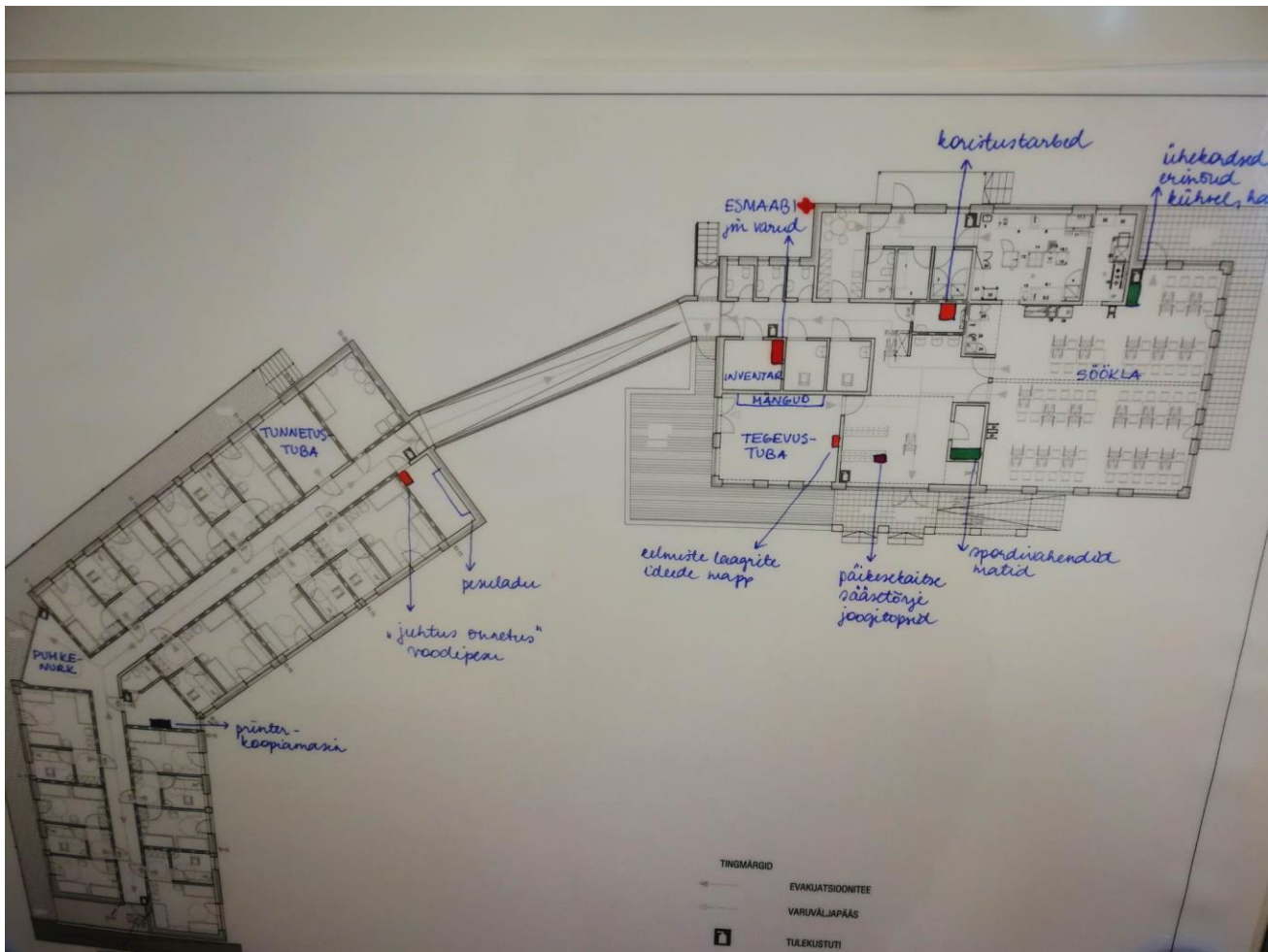
Venue for joint training where all participants are together.



Accommodation – 2-3 persons in one room (3 only if participants wish to be together). 5 rooms have own shower and toilet. 8 rooms are so, that there is a toilet for 2 rooms – in the joint corridor where you enter the unit. There are 4 such units.



Building plan (left side the rooms, right side the hall for events/catering)



Meeting room in the historical building





All toilets/showers in the accommodation are designed the same way – for mobility impaired there are no barriers.



## Background of the venue

The users of the venue are children with disabilities, families with children with disabilities, NGO-s who want to have a course or an event. During summer, children respite care activities are scheduled throughout. The historical building was fully renovated in 2015. In 2022, the new accommodation unit was ready for use together with another renovated unit for short-term care for young adults with complex dependency needs.



## Logistics

### Arrival either 29<sup>th</sup> or 30<sup>th</sup> of September

If arrival in **Tallinn**, participants have to take a bus or train to Tartu, from there transportation will be sorted out based on when and how many are arriving. Travel time – 2 h

It is also possible to fly to **Tartu**, but only via Helsinki. If arriving in Tartu by plane, transportation shall be organised by project from the airport to Tammistu (based on how many and who is arriving).

**Tammistu** is located 15 km from Estonian 2<sup>nd</sup> largest town **Tartu**. It's a former manor house venue located in a village where there are **no shops or other catering options** – so its important to think through if you need to buy goods.

**Dietary needs will be taken into account based on who will attend.**

**Project coordinators are assisting with needs which pop up.**